

# Kestrel Heat Stress Monitoring Tablet

## Quick Setup Guide

### 1) Tablet drywall mount instructions

It is recommended to mount the tablet in portrait orientation, as the LiNK app is optimized for portrait mode.

- » Use provided anchors for drywall.
- » Measure and mark the location for the anchors.
- » Drill a pilot hole.
- » Use a hammer to carefully tap the anchor into the hole until the collar of the anchor is flush with the wall surface. Don't drive the collar beneath the surface of the wall.
- » Insert the screw through the mounting hole of the wall mount you're installing and drive it into the anchor. The screw will cause the anchor to expand and secure itself against the back of the wallboard.

**WARNING:** This is intended for indoor use only. Disconnecting or loss of AC power will render your device inoperable.

### 2) Set up the Kestrel LiNK App

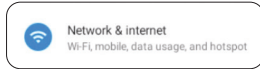
Download the app on your tablet and connect to your Kestrel 5400.

- » Plug in and power on the tablet.



Settings

- » Go to **Settings > Network & Internet**. Establish an internet connection.



Play Store

- » Return to the main screen, swipe up, and select the Google Play Store app.
- » Set up or log into a Google account.

- » Download the Kestrel LiNK App (blue & white icon).

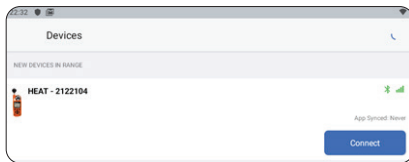
- » Open the Kestrel LiNK app and connect to your Kestrel device. You may have to accept prompts to allow access to Bluetooth.

- » Hit refresh to find available Bluetooth pairing devices.

**NOTE:** It might take a couple of attempts to successfully connect to your device.



**KESTREL LINK**  
KNOW YOUR CONDITIONS



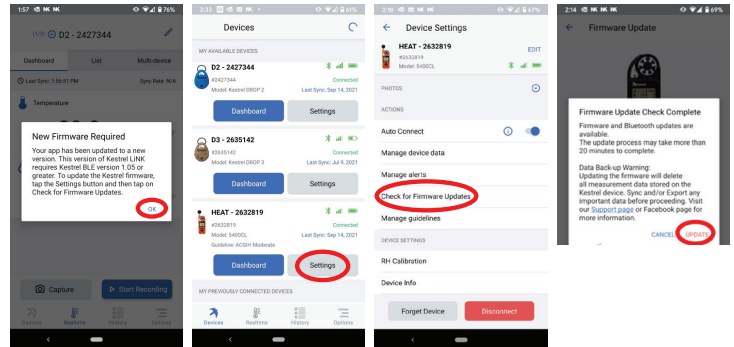
### 3) Set up the Kestrel LiNK App (cont)

Once you connect your device, you might receive a prompt stating "New Firmware Required"

Click on "Settings" to check for new firmware.

Click "Check for Firmware Updates"

Click "Update" if a new Firmware update is available.

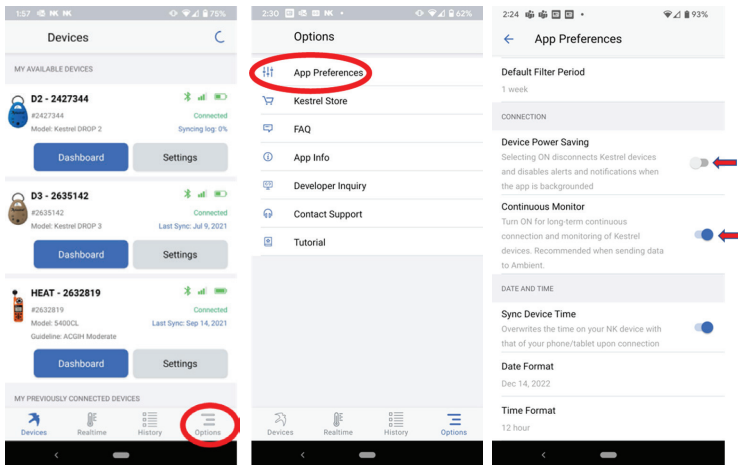


### 4) Enable continuous monitoring

Click on "Options" in the LiNK app.

Go to "App Preferences"

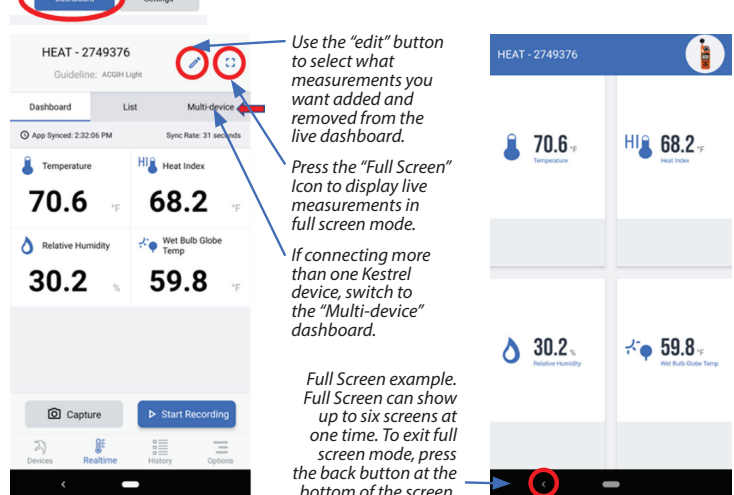
Device power saving should be "Off" and Continuous Monitor should be "On" as shown below.



### 5) Configure your dashboard display

Click on the "Devices" icon at the bottom left of your screen to return to your Kestrel synced devices.

Then click on "Dashboard":



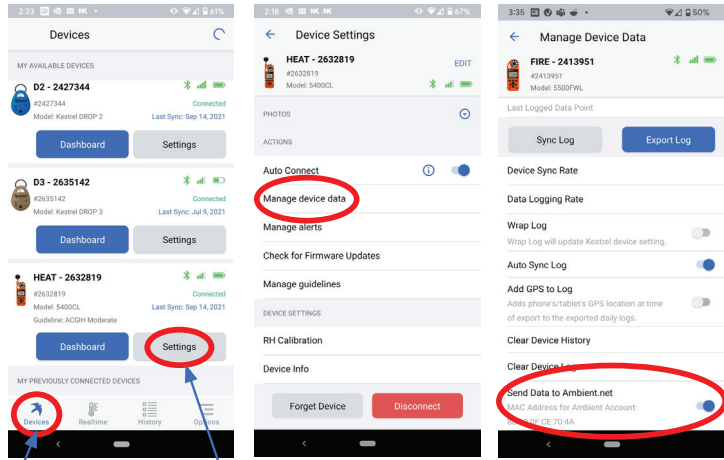
Use the "edit" button to select what measurements you want added and removed from the live dashboard.

Press the "Full Screen" icon to display live measurements in full screen mode.

If connecting more than one Kestrel device, switch to the "Multi-device" dashboard.

Full Screen example. Full Screen can show up to six screens at one time. To exit full screen mode, press the back button at the bottom of the screen.

## 6) Send data to AmbientWeather.net for remote monitoring



In Kestrel LiNK, go to your "Devices" and click on "Settings"

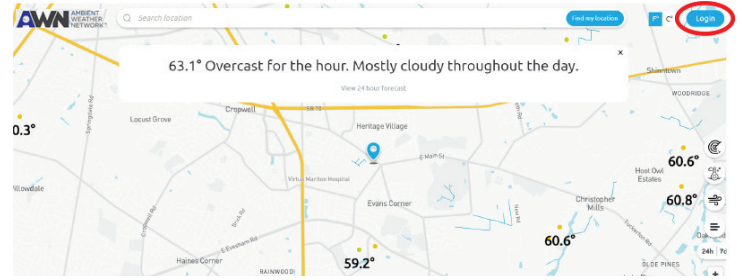
Select "Manage Device Data"

Slide toggle on to send data to AmbientWeather.net. This will also show your MAC Address.

## 7) Connect to AWN

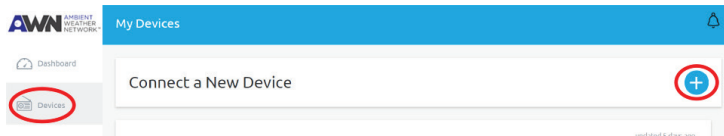
**NOTE:** The Kestrel LiNK App **must be running in the foreground** on the remote monitoring tablet to transmit data to Ambient Weather Network continuously.

- » Using another internet-connected device such as a laptop or mobile phone, go to *AmbientWeather.net* to set up an account.
- » Click the "Login" button.
- » Log in to an existing account or create a new account.

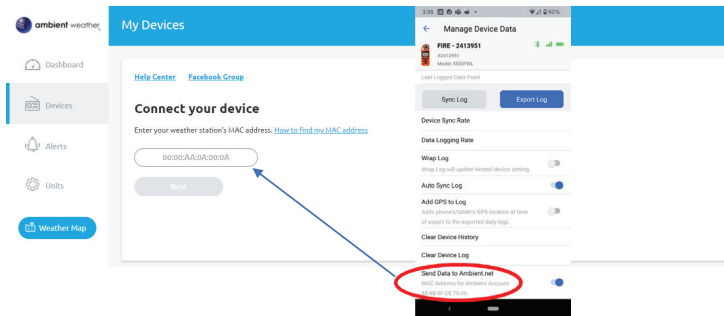


## 8) Connect to AWN (cont)

- » Once you create or log in to your AWN account, select "Devices" on the top left and click the + icon to add a new device.



- » Enter the MAC Address displayed on the Kestrel LiNK app for the device you would like to use for remote viewing and click "Next".



## 9) Connect to AWN (cont)

- » Enter a name for your Kestrel device.
- » Enter your device location.
- » The location will be displayed on the AWN map.
- » Select your time zone.
- » Check if you would like to make your device data viewable on the public map.
- » Select "Create" to finish set up.

**Now let's get some details:**

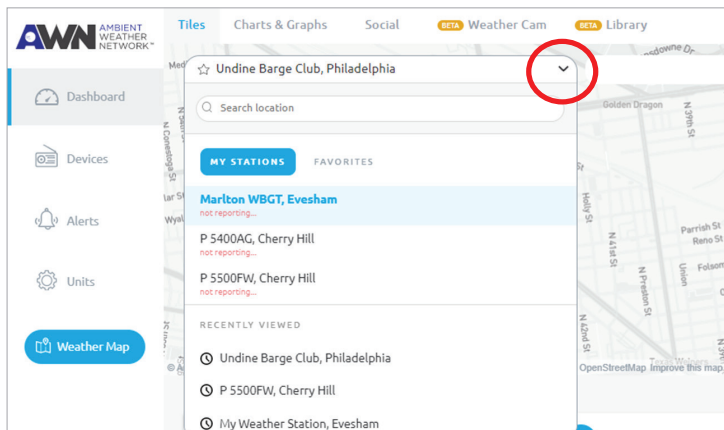
Give your device a name

Where is your device located?  
  
[Select location from map view](#)

Timezone

Community  
 Allow others to view my weather station data. Add a location to your device above so others can find it on the map.

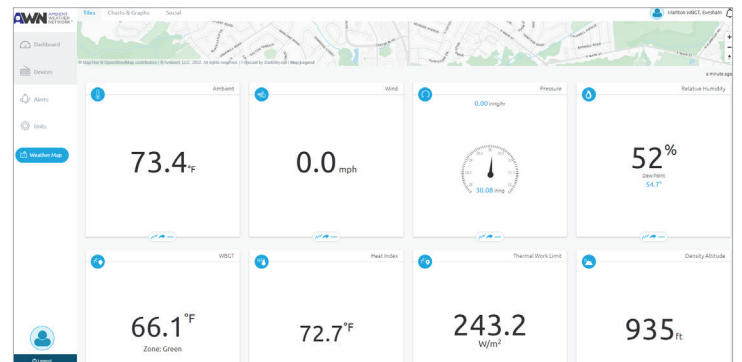
## 10) Connect to AWN (cont)



- » Go to your dashboard to select which Kestrel device you would like to view from the dropdown.
- » Set up complete!

**NOTE:** It may take up to five minutes for data to start reporting.

## 11) Connect to AWN (cont)



AWN Dashboard View